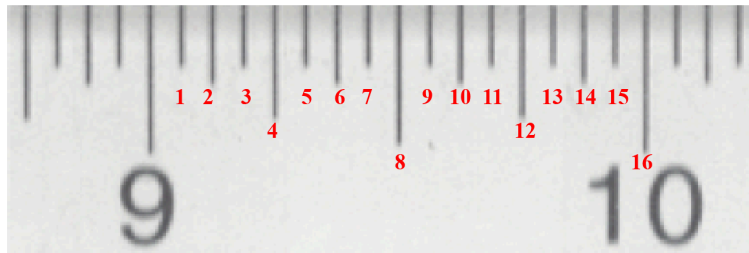


# How to “Read” a Ruler

Step

3

Count the lines between the whole inch numbers 9 and 10.



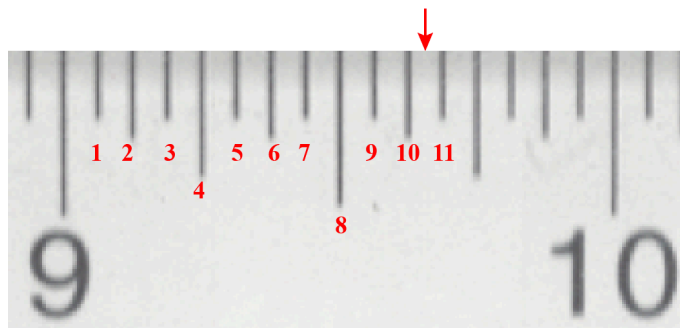
4

**Double** that number:  
 $16 \times 2 = 32$ ; and then write the product, **32**, as the **denominator** of the fractional part of the measurement.

$$9 \frac{?}{32}''$$

5

Count the lines before and after the red arrow.



6

Add those two numbers:  
 $10 + 11 = 21$ ; and then write that sum, **21**, as the **numerator** of the fractional part of the measurement.

$$9 \frac{21}{32}''$$

The ruler measurement is  $9 \frac{21}{32}$  inches.